



WINDY SMARTPHONE ANEMOMETER QUICK GUIDE



WINDY SMARTPHONE ANEMOMETER QUICK GUIDE



NAVIS

NAVIS elektronika
E-mail: info@navis-elektronika.com
www.navis-anemometers.com



NAVIS

NAVIS elektronika
E-mail: info@navis-elektronika.com
www.navis-anemometers.com



NAVIS

WINDY SMARTPHONE ANEMOMETER QUICK GUIDE



NAVIS

WINDY SMARTPHONE ANEMOMETER QUICK GUIDE



NAVIS

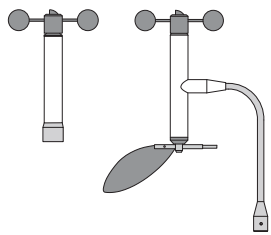
NAVIS elektronika
E-mail: info@navis-elektronika.com
www.navis-anemometers.com



NAVIS

NAVIS elektronika
E-mail: info@navis-elektronika.com
www.navis-anemometers.com

1. Assembly



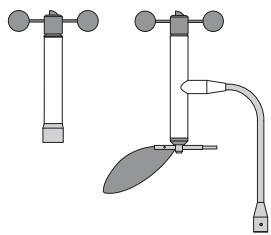
Install the cups on sensor and rotate them for sensor activation.

2. Application



Install "Windy Anemometer" application from "Google Play" or "App Store".

1. Assembly



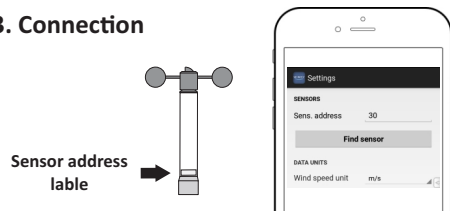
Install the cups on sensor and rotate them for sensor activation.

2. Application



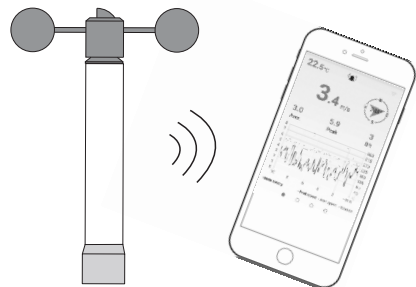
Install "Windy Anemometer" application from "Google Play" or "App Store".

3. Connection



1. Turn ON Bluetooth on smart device.
2. In application settings set "Sensor address" parameter to address of sensor or choose "Find sensor" option for searching nearby sensors.

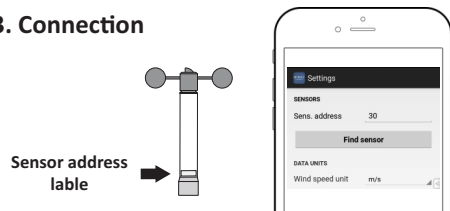
4. Data



Observe sensor data on application main screen.

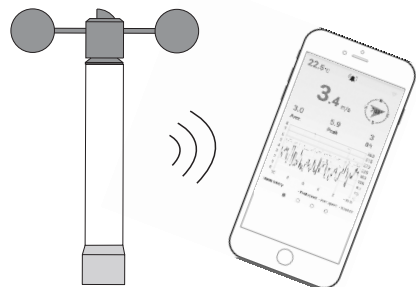
For more information see user manual or application "Help".

3. Connection



1. Turn ON Bluetooth on smart device.
2. In application settings set "Sensor address" parameter to address of sensor or choose "Find sensor" option for searching nearby sensors.

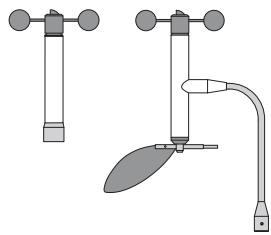
4. Data



Observe sensor data on application main screen.

For more information see user manual or application "Help".

1. Assembly



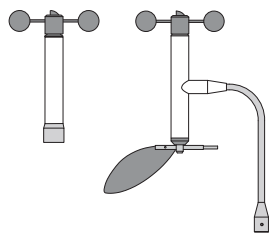
Install the cups on sensor and rotate them for sensor activation.

2. Application



Install "Windy Anemometer" application from "Google Play" or "App Store".

1. Assembly



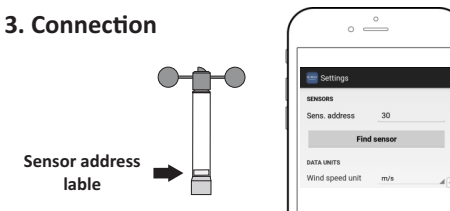
Install the cups on sensor and rotate them for sensor activation.

2. Application



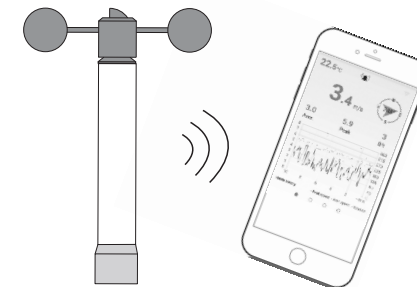
Install "Windy Anemometer" application from "Google Play" or "App Store".

3. Connection



1. Turn ON Bluetooth on smart device.
2. In application settings set "Sensor address" parameter to address of sensor or choose "Find sensor" option for searching nearby sensors.

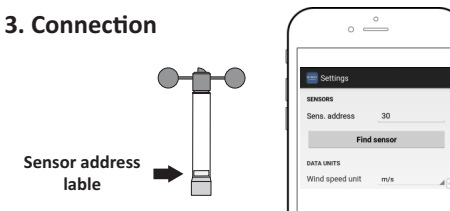
4. Data



Observe sensor data on application main screen.

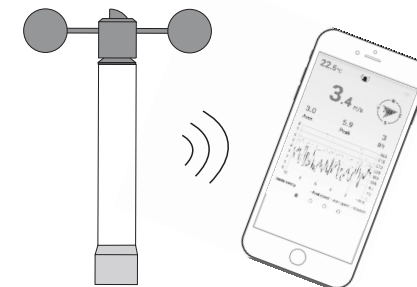
For more information see user manual or application "Help".

3. Connection



1. Turn ON Bluetooth on smart device.
2. In application settings set "Sensor address" parameter to address of sensor or choose "Find sensor" option for searching nearby sensors.

4. Data



Observe sensor data on application main screen.

For more information see user manual or application "Help".